



SPARCRAFT™
Performance Engineering

summary

NEW FACTORY

NEW RANGE OF BOOMS

improvement of peripheral parts

E-Shop & configurator

A New Industrial Site Opening in 2026!

Sparcraft has launched a major modernization program and will open a new 7,000 m² production facility in 2026, bringing significant improvements in performance, quality and environmental impact.

Furthermore, Sparcraft is continuing to update its boom ranges.

Begun in 2024, the boom range will be expanded with new components and a new SB 4000 profile...

Avenir Sparcraft = Un nouveau pôle industriel

- > 7 000m² production area > +40% compare with today
- > 23 m anodizing tanks : longest in Europe
- > 23 m powder-coating line (both + oven)
- > Two 22.5 m machining centers
- > Over 2,200 m² of indoor storage for cast parts and sub-assemblies

new ! New Boom range - SB 4000 and upgraded components

The upgrade of our boom ranges, initiated in 2024, continues with new components and the introduction of the SB4000 profile (available in 2026).

- > New geometry : higher inertia for equivalent weight
- > Improved single-line reefing systems
- > Modification of the components
 - new flush out/inboard ends (see below)
- > SB1900 & SB2700 : New cast part and improved specifications
- > SB4000 : welded inboard ends (up to 10m, characteristics over F3400 with same weight)

Adopted by Several Shipyards: booms : Pegasus 50' (SB1900), Nautitec 48, Jeanneau 55, Bali 5.8,...



SB 1900

Specifications	
Longitudinal	Lateral
Dim 228 mm	191 mm
Inertia 1910 cm ⁴	870 cm ⁴
Weight 7.0 kg/m	

SB 2700

Specifications	
Longitudinal	Lateral
Dim 254 mm	194 mm
Inertia 2730 cm ⁴	770 cm ⁴
Weight 8.17 kg/m	

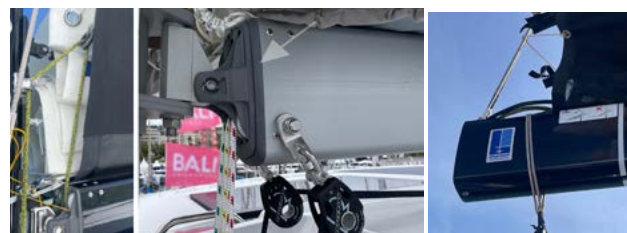
SB 4000

Specifications	
Longitudinal	Lateral
Dim 290 mm	145 mm
Inertia 4000 cm ⁴	1100 cm ⁴
Weight 9.75 kg/m	



> Inboard end :

- Automatic possible 3 automatic reefing lines
- Optimizing casting to reduce wear
- Improved clearance of reefing points
- Better protection of self-adhesive reef patches



> Outboard end :

- Integrated end fittings
- Improved casting for reduced friction and wear

Peripheral Improvements

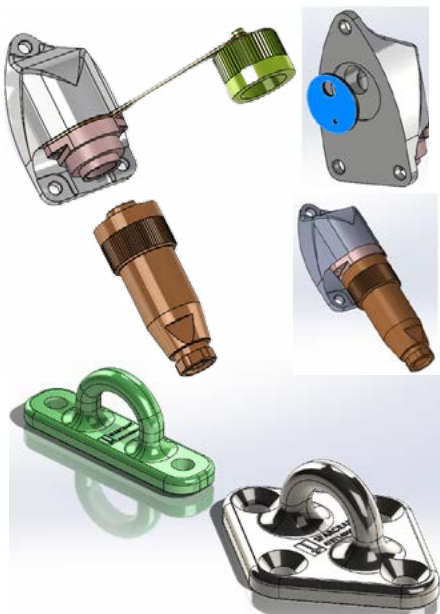
New electric connection

- > Aquasignal electrical connection replacement
- > Designed to cost vang end for large model

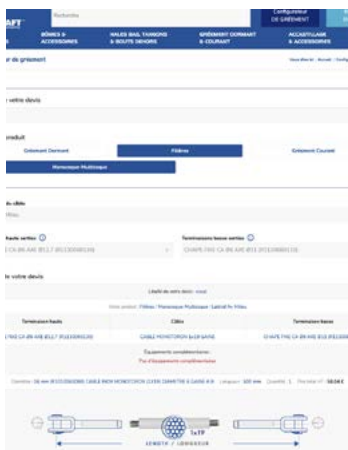


New pad Eyes for sailfoot

- > Pad eye single foot lashing (horizontal)
- > Pad eye Lashing with multiple foot (big sections) : Heavy-duty multiple-point lashing pad eye



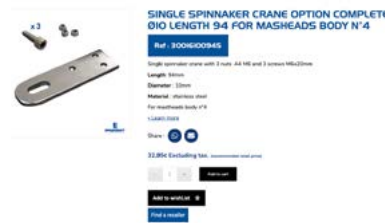
Model	Standard boom	Canoe Boom
Short model	F550 -> F1700	F810 -> F1700
Big model	F3400 -> S1540	F3400 -> S1540



E-boutique Sparcraft and configurator

order selected Sparcraft products even on Sundays!

- > Progressive launch of hundreds of products online
- > Standing rigging & lifeline configurator
- > Dedicated customer portal with personalized pricing
- > Get started in April 2026!



SPARCRAFT Périgny

4-8, Rue Blaise Pascal
Z.I. de Périgny F-17185 Périgny
TEL : +33 (0)5 46 45 90 45
e-mail : contact@sparcraft.com

CONTACT COMMERCIAL :

William Thomas
Directeur commercial
TEL : +33 (0) 05 17 67 13 23
e-mail : wthomas@sparcraft.com

